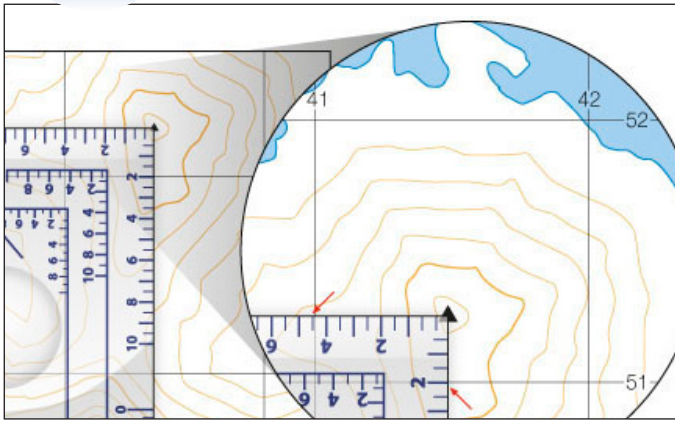
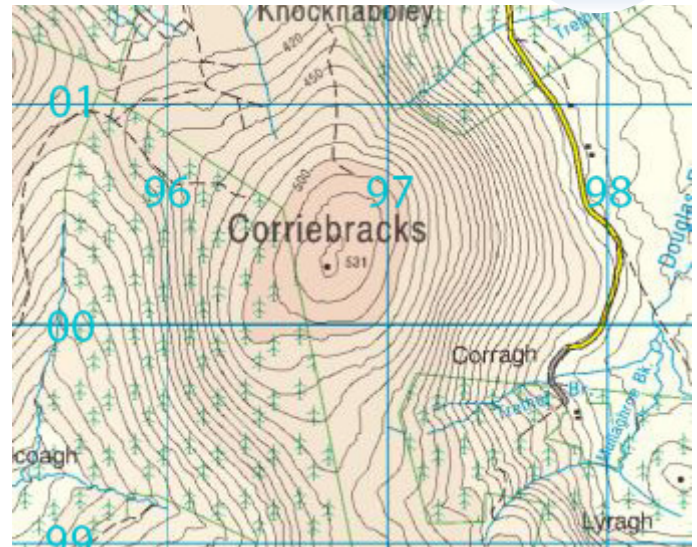




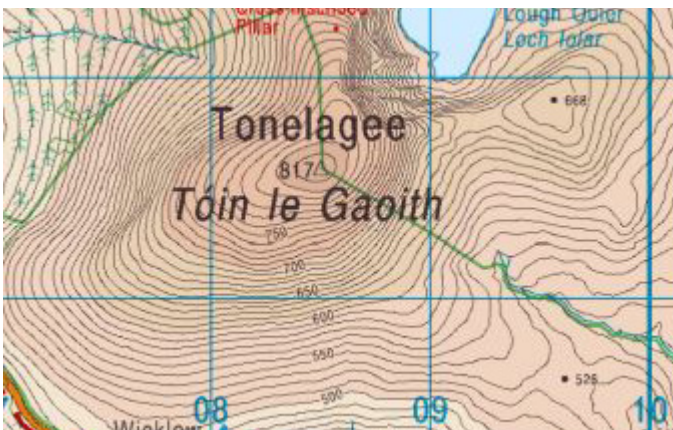
Grid Reference Work Sheet



Grid references start with a letter followed by six numbers. A romer is used to measure the grid reference. Place the corner of the romer on the required point and read off the figures that align with the grid on the map. The sample above, using a 1:25k scale map and romer, gives a reading of 414 512. This provides a 100 square metre grid reference.

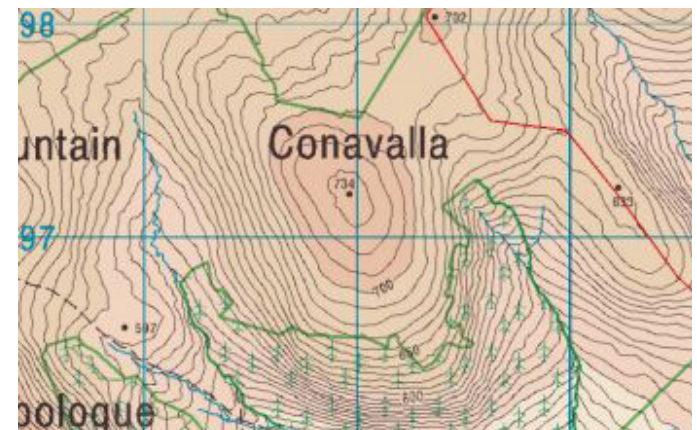


Example: Corriebracks Summit (531mt) -
National Grid Letter: **N** Easting: **96** Northing: **00**
Place the corner of a 1:50k Romer on the summit
this reads **7** & **2**: Grid Reference: N 967 002



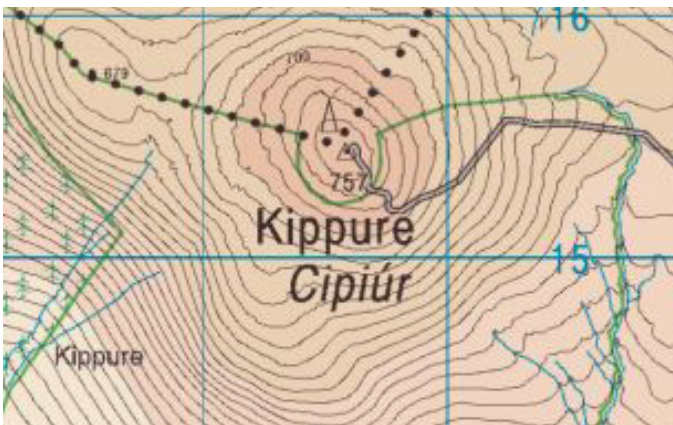
Tonelagee Summit (817) Map OSI 56. Scale 1:50k

Grid Reference? _____



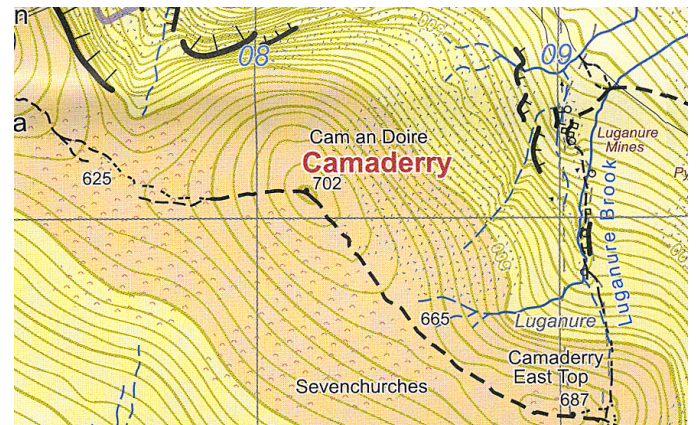
Conavalla Summit (734) Map OSI 56. Scale 1:50k

Grid Reference? _____



Kippure Summit (757) Map OSI 56. Scale 1:50k

Grid Reference? _____



Camaderry Summit (702) Map EastWest Scale 1:30k

Grid Reference? _____